

Z1020XL ELECTRONIC TRAP PRIMER



ENGINEERING SPECIFICATION

Zurn Z1020XL factory programmed, 5-port, lead-free electronic trap primer provides a six second water injection to traps every twenty-four hours.[†] Trap primer features a galvanized steel combination surface or recessed housing and cover, 1/2" solder copper inlet connection, brass ball-type stop valve, slow-closing 24 VAC solenoid valve with integral strainer, 120-24 VAC transformer, brass atmospheric vacuum breaker, PEX waterway, and anti-scaling multi-port manifold with five 1/2" male PEX outlet connections.

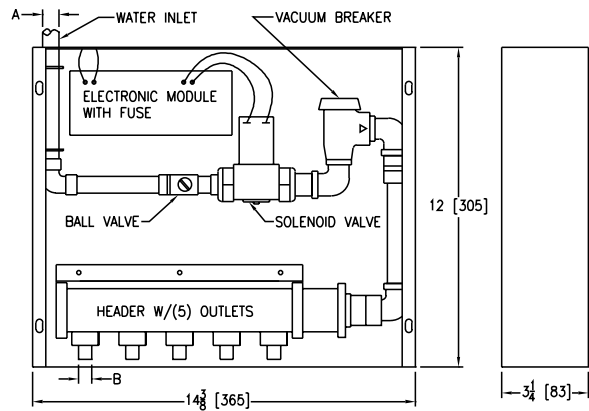
Min. Pressure: 3 psi
 Working Pressure: 20 to 100 psig
 Default Settings:
 -Frequency: 24 hours
 -Injection Time: 6 seconds
 -Volume: 2 oz. min. per port

NOTE

[†]Regularly furnished unless otherwise specified. Alternative flow settings are available upon request.

Dimensions in inches [mm]		Approximate Weight lb [kg]
A Inlet Pipe Size	B Outlet Pipe Size	
1/2 [13] Solder	1/2 [13] PEX Connection	12 [5]

PREFIXES	DESCRIPTION	LIST PRICE
Z1020XL*	PEX Waterway	4,491.00
SUFFIXES		ADD
-CW	Copper Waterway (with 1/2" Female IPS Connection)	488.00
-DU4	Additional Distribution Units with Copper Waterway (Specify quantity. Contact Zurn for sizing specifications)	388.00
-VP	Vandal-Proof Secured Cover with Vandal-Proof Driver	58.00
-10	Ten Outlets	610.00
BEST SELLERS		LIST PRICE
Z1020XL-10		5,101.00
Z1020XL-10-CW		5,589.00
Z1020XL-5		4,491.00
Z1020XL-5-CW		4,979.00



Z1021 WATER SAVER TRAP PRIMER WITH 1-1/2" COPPER SWEAT WALL CONNECTION

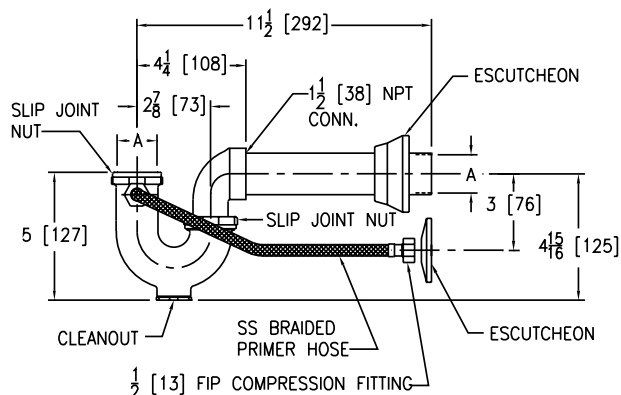


ENGINEERING SPECIFICATION

Zurn 1021 water saver trap primer features chrome-plated, polished cast brass body with cleanout, ground joint elbow with 1-1/2" NPT outlet, 1-1/2" slip nuts and washers, and reducing washer for 1-1/4" sink tail piece hookup, escutcheons, and stainless steel braided primer hose with 1/2" FIP compression fittings.

Dimensions in inches [mm]		Approximate Weight lb [kg]
A Pipe Size		
1-1/2 [38]		2 [1]

PREFIXES	DESCRIPTION	LIST PRICE
Z1021*	Polished Chrome Plated	582.00
SUFFIXES		ADD
-WL	One-piece Waste Elbow (For Slip Joint Wall Connection)	102.00
BEST SELLERS		LIST PRICE
Z1021-1-1/2		582.00
Z1021-1-1/2-WL		684.00



For additional product information, please visit www.zurn.com

[†]Regularly furnished unless otherwise specified.

Items designated as Best Sellers are most specified and are generally in stock for shipment.

Ⓢ This symbol denotes a product that is engineered to reduce installation and rework time.